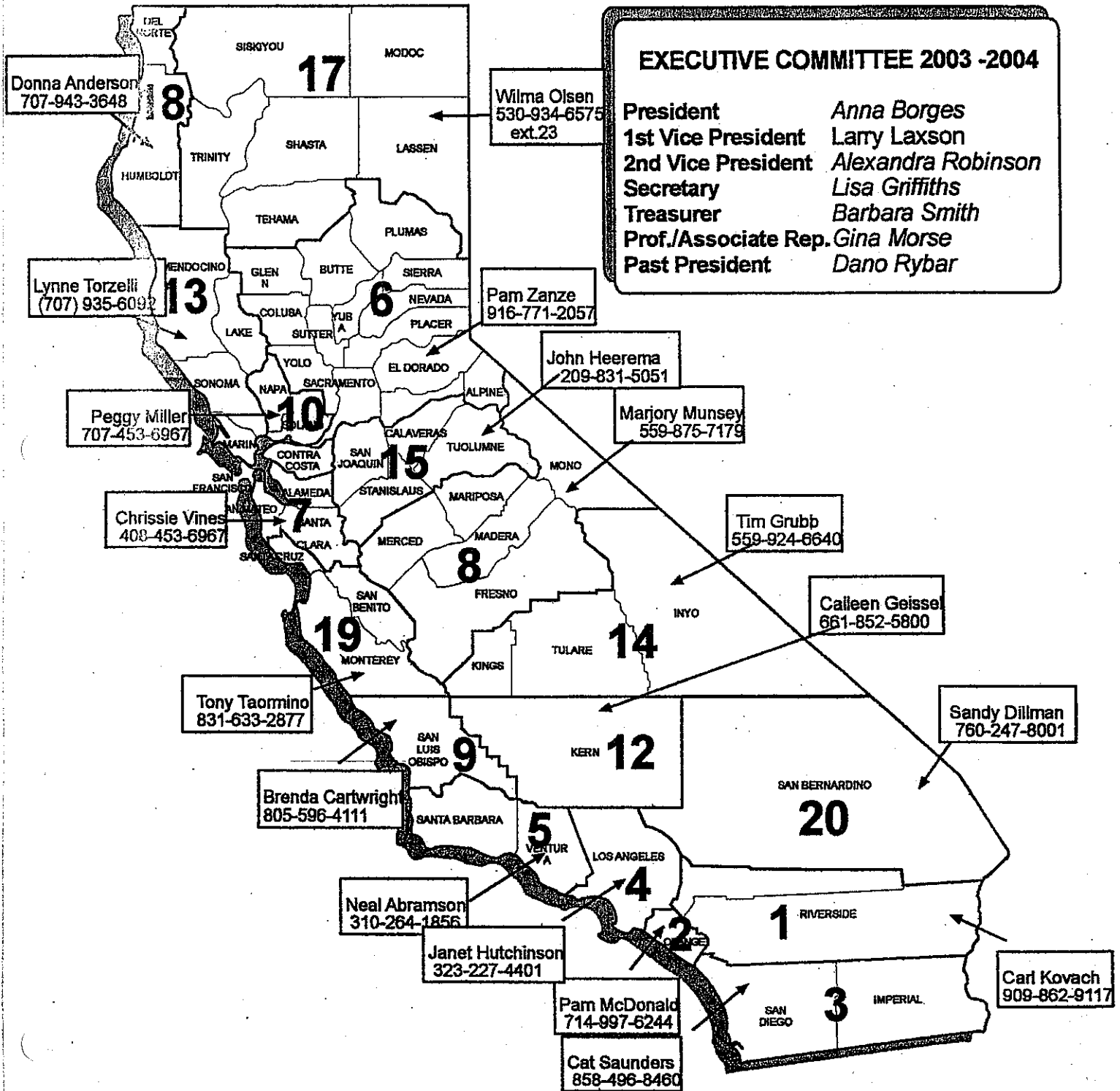
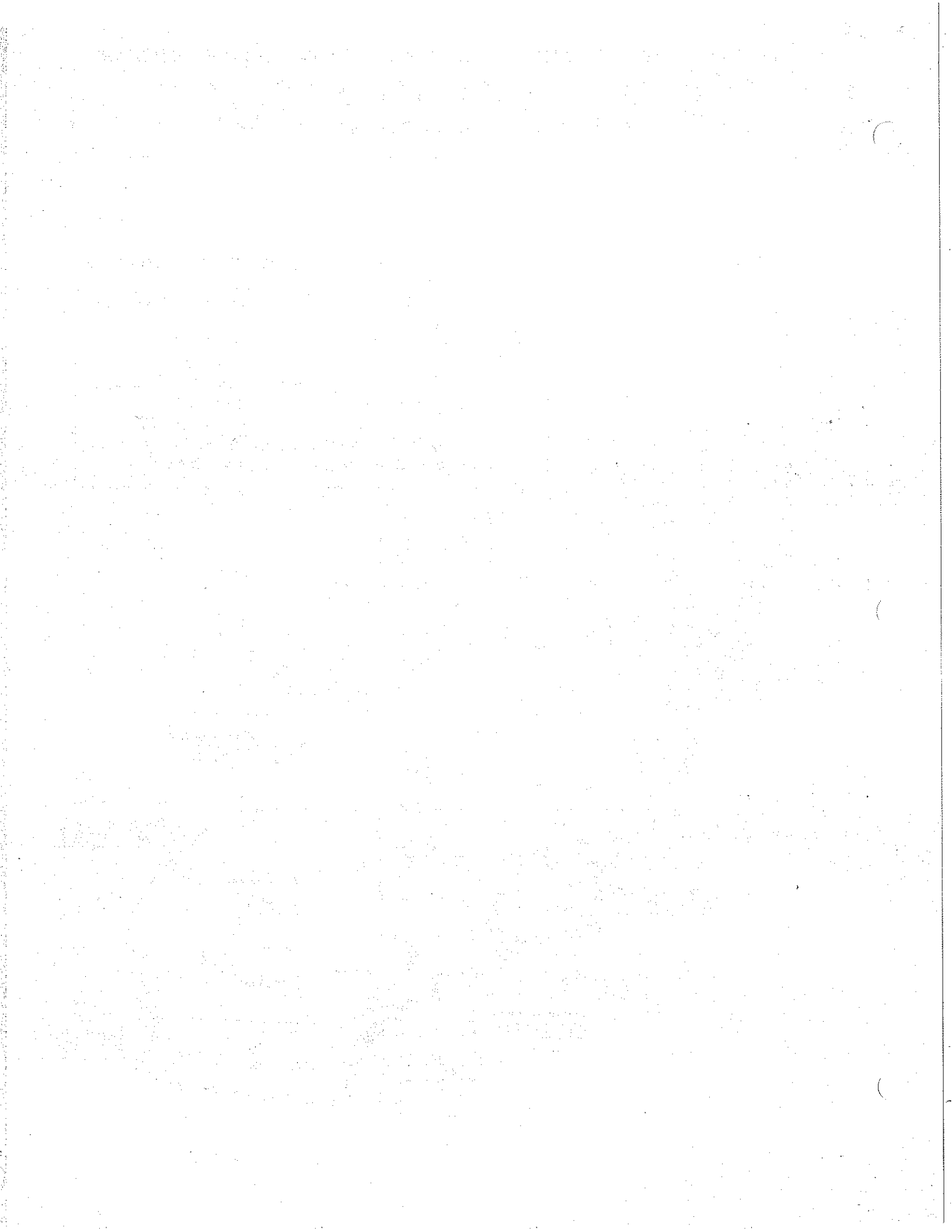


# CASTO 2003-2004



**EXECUTIVE COMMITTEE 2003 -2004**

<b>President</b>	<i>Anna Borges</i>
<b>1st Vice President</b>	<i>Larry Laxson</i>
<b>2nd Vice President</b>	<i>Alexandra Robinson</i>
<b>Secretary</b>	<i>Lisa Griffiths</i>
<b>Treasurer</b>	<i>Barbara Smith</i>
<b>Prof./Associate Rep.</b>	<i>Gina Morse</i>
<b>Past President</b>	<i>Dano Rybar</i>



The California Association of School Transportation Officials provides this directory as a service to the School Transportation Industry. The listings in this directory may provide a transportation operation with cooperative aide.

The degree of service provided will be determined by the operations involved. CASTO's first concern is the safety of the passengers.

CASTO's participation in this directory is limited to promulgation and revision.

## **FORWARD**

This Mutual Aid Directory is being compiled and published by Chapter Ten, California Association of School Transportation Officials, as a continuing project.

CASTO gratefully acknowledges the hard work and perseverance of CASBO in the introduction and promulgation of the Mutual Aid Directory. It is our goal to keep up the fine efforts of those hard workers who devoted much time and energy to this directory. This can only be accomplished by submission of your updated information.

Any revision to the Mutual Aid Manual must be submitted by March 1<sup>st</sup> of each year. Please include your county.

Mail to: CASTO Mutual Aid  
C/O Vacaville Unified School District  
P.O. Box 5896  
Vacaville, CA 95696

Peggy Miller  
President, CASTO Chapter 10

**CALIFORNIA HIGHWAY PATROL OFFICES**

ALTURAS	(530) 233-2919	NEWHALL	(805) 257-6030
AMADOR	(209) 223-4890	OAKLAND	(510) 450-3821
ANTELOPE VALLEY	(661)948-8541	OCEANSIDE	(760)757-1675
ARROWHEAD	(909) 867-2791	ONTARIO	(714) 984-1241
AUBURN	(916) 663-3344	OROVILLE	(530) 533-3822
BAKERSFIELD	(661)327-1069	PASO ROBLES	(805) 434-1822
BALDWIN PARK	(626)338-1164	PLACERVILLE	(530) 622-1110
BANNING	(909) 845-4661	PORTERVILLE	(599)784-7444
BARSTOW	(760) 256-1727	QUINCY	(530)283-1100
BISHOP	(760) 873-3531	RANCHO CALIFORNI	(714) 676-0112
BLYTHE	(760)922-6141	RED BLUFF	(916) 527-2034
BRIDGEPORT	(760)932-7995	REDDING	(916) 225-2700
BUELLTON	(805) 688-5551	REDWOOD CITY	(415) 369-6261
CAPISTRANO	(949)481-4000	RIVERSIDE	(909) 688-8000
CENTRAL L.A.	(213) 744-2331	SACRAMENTO	(916) 445-2211
CHICO	(530) 895-4444	SAN ANDREAS	(209) 754-3541
CLEAR LAKE	(707)279-0103	SAN BERNARDINO	(909) 383-4247
COALINGA	(559)935-2093	SAN DIEGO	(619) 296-6661
CONTRA COSTA	(925) 646-4980	SAN FRANCISCO	(415) 557-1094
CRESCENT CITY	(707) 464-3117	SAN JOSE	(408) 467-5400
CUCAMONGA	(909) 980-3994	SAN LUIS OBISPO	(805) 593-3333
DUBLIN	(925)828-0466	SANTA ANA	(714) 547-8311
EAST L.A.	(213) 724-5150	SANTA BARBARA	(805) 967-1234
EL CAJON	(619) 401-2000	SANTA CRUZ	(831)662-0511
EL CENTRO	(619) 352-4111	SANTA FE SPRINGS	(562)868-0503
FRESNO	(760)441-5441	SANTA MARIA	(805) 349-8728
GARBERVILLE	(707) 923-2155	SANTA ROSA	(707)588-1400
GLENDALE	(213) 843-5000	SOLANO	(707) 428-2100
GOLD RUN	(530) 389-2205	SONORA	(209) 984-3944
GRASS VALLEY	(530) 273-4415	SOUTH L.A.	(310) 736-2990
HANFORD	(539) 582-0231	SO. SACRAMENTO	(916) 681-2300
HAYWARD	(510) 489-1500	STOCKTON	(209) 943-8666
HOLLISTER-GILROY	(408) 848-2324	SUSANVILLE	(530) 257-2191
HUMBOLDT	(707) 822-5981	TEJON	(805) 248-6655
INDIO	(760)778-8911	TEMPLETON	(805) 434-1822
KING CITY	(831)385-3216	TRACY	(209) 835-8920
LAKE VALLEY	(530) 577-1001	TRINITY RIVER	(530) 623-3832
LAKEPORT	(707) 263-5314	TRUCKEE	(530) 587-3518
LOS ANGELES	(213) 744-2331	UKIAH	(707) 463-4717
LOS BANOS	(209) 826-3811	VENTURA	(805) 654-4571
MADERA	(559)657-1025	VICTORVILLE	(760) 241-1186
MALIBU	(213) 456-3369	VISALIA	(559)734-6767
MARIN	(415) 924-1100	WEST L. A.	(310) 670-0938
MARIPOSA	(209) 966-3656	WEST VALLEY	(818) 888-0980
MERCED	(209) 357-6910	WILLIAMS	(530) 473-2821
MODESTO	(209) 545-7440	WILLOWS	(530) 934-5424
MOJAVE	(805) 824-2408	WINTERHAVEN	(760)572-0294
MONTEREY	(831) 455-1822	WOODLAND	(530) 662-4685
MOUNT SHASTA	(530) 926-2627	YREKA	(530) 841-2505
N. SACRAMENTO	(916) 263-3550	YUBA-SUTTER	(530) 674-5141
NAPA	(707) 253-4906		
NEEDLES	(760) 326-2000		

CNG FUELING STATIONS

Fueling Station Name	Access Type	Hours	Fuel Card Type	G K a e t y e ?	Location	City	State
Auburn Service Center (PG & E #14)	Public	24 Hrs	PG&E		333 Sacramento Street	Auburn	CA
Belmont Service Center (PG & E #21)	Public	24 Hrs	PG&E		1970 Industrial Way	Belmont	CA
Chico Service Center (PG & E #30)	Public	24 Hrs	PG&E		11239 Midway	Chico	CA
Concord Service Center (PG & E #1)	Public	24 Hrs	PG&E		1030 Detroit Avenue	Concord	CA
Cupertino Service Center (PG & E #35)	Public	24 Hrs	PG&E		10900 N. Blaney Avenue	Cupertino	CA
Davis Service Center (PG & E #20)	Public	24 Hrs	PG&E		316 L Street	Davis	CA
Grass Valley Service Center (PG & E #27)	Public	24 Hrs	PG&E		West McKnight Way	Grass Valley	CA
Hayward Service Center (PG & E #9)	Public	24 Hrs	PG&E		24900 Clewiter Road	Hayward	CA
Redwood Exxon	Public	24 Hrs	Call for Payment Options		2008 Redwood Road	Napa	CA
City of Oakland	Public	7:00am - 4:30pm	By Arrangement		7101 Edgewater Drive	Oakland	CA
Oakland Service Center (PG & E #2)	Public	7:00am - 4:30pm	PG&E		4801 Oakport Road	Oakland	CA
Folsom/Cordova USD	Public		Pinnacle CNG		11486 Eiks Circle	Rancho Cordova	CA
Sacramento International Airport	Public	24 Hrs	PG&E		7001 Airport Blvd	Sacramento	CA
Sacramento Service Center-Florin-Perkins (PG & E #4)	Public	7:00am - 4:30pm	PG&E		5555 Florin-Perkins Road	Sacramento	CA
Sacramento Service Center (PG & E #5)	Public	24 Hrs	PG&E	X	2001 Front Street	Sacramento	CA
San Francisco Service Center (PG & E #33)	Public	7:00am - 4:30pm	PG&E		536 Treat Avenue	San Francisco	CA
San Francisco Intl Airport	Public	24 Hrs	Trillium		Southview lot, S.F. Airport	San Francisco	CA
Olympian Off: South San Francisco	Public	24 Hrs	PG&E		190 East Grand Avenue	South San Francisco	CA
San Jose Service Center (PG & E #11)	Public	7:30am - 5:00pm Weekdays	PG&E		308 Stockton Avenue	San Jose	CA
San Jose Unified School District	Public	24 Hrs	Pinnacle CNG		Highway 87 & Curtner on Northbound	San Jose	CA
San Rafael Service Center (PG & E #12)	Public	7:00am - 5:00pm Weekdays	PG&E		1220 Andersen Drive	San Rafael	CA
UPS/Pinnacle	Public	24 Hrs	Pinnacle		4500 Norris Canyon Road	San Ramon	CA
Santa Cruz Service Center (PG & E #28)	Public	8:00am - 5:00pm Weekdays	PG&E		615 7th Avenue	Santa Cruz	CA
Santa Rosa Service Center (PG & E #19)	Public	24 Hrs	PG&E		3965 Occidental Road	Santa Rosa	CA
Campora Facility	Public	24 Hrs	Call for Options		1040 Shop Street	S. Lake Tahoe	CA
Vacaville Service Center (PG & E #34)	Public	24 Hrs	PG&E		158 Peabody Road	Vacaville	CA
UPS	Public	24 Hrs	Pinnacle CNG		1320 Shore Street	West Sacramento	CA
BC Stocking Station	Public	24 Hrs	PG&E		341 Industrial Way	Woodland	CA
Bakersfield Service Center (PG & E #10)	Public	24 Hrs	PG&E		4101 Wible Road	Bakersfield	CA
Clovis Unified School District	Public	24 Hrs	FleetStar or CFN		1450 Herndon Avenue	Clovis	CA
City of Delano	Public	24 Hrs	SoCal Gas		725 South Lexington Street	Delano	CA
CSU, Fresno	Public	24 Hrs	FleetStar or CFN		On Chestnut, North of Barstow	Fresno	CA

CNG FUELLING STATIONS

Fueling Station Name	Access Type	Hours	Fuel Card Type	GK 0 1 2 3 4 5 6 7 8 9 ?	Location	City	State
Fresno City Yard	Public	24 Hrs	PG&E		E' Street and El Dorado Street	Fresno	CA
Visa Petroleum	Public	24 Hrs	FleetStar or CFN		2414 Monterey Street	Fresno	CA
Kings County Yard	Public	24 Hrs	Socal Gas or PFC		11827 South 11th Avenue	Hanford	CA
E. F. Kludt & Sons	Public	24 Hrs	FleetStar or CFN		1126 East Pine Street	Lodi	CA
Merced Services Center (PG & E)	Public	By appointment Only	PG&E		3185 W' Street	Merced	CA
W. H. Breshers	Public	24 Hrs	FleetStar or CFN		428 7th Street	Modesto	CA
City of Monterey	Public	24 Hrs	City of Monterey		25 Ryan Ranch Road	Monterey	CA
Salinas Service Center (PG & E #17)	Public	24 Hrs	PG&E		390 Griffin Street	Salinas	CA
J.B. Dewar #1	Public	24 Hrs	Socal Gas or PFC		75 Prado Road	San Luis Obispo	CA
Gibbs Automated Fuel	Public	24 Hrs	PG&E		3555 S. Academy Avenue	Sanger	CA
Santa Barbara Base (Socal Gas #14)	Public	24 Hrs	Socal Gas		630 E. Montecito Street	Santa Barbara	CA
Stockton Service Center (PG & E #16)	Public	24 Hrs	PG&E		4040 West Lane	Stockton	CA
City of Tulare	Public	24 Hrs	FleetStar or CFN		3989 South K Street	Tulare	CA
Visalia Base (Socal Gas)	Public	24 Hrs	Socal Gas		320 N. Tipton Avenue (Base Addr	Visalia	CA
Whittier School District	Public	24 Hrs	Socal Gas		13200 Mulberry Drive	Whittier	CA
Shell Oil: Anaheim	Public	24 Hrs	Shell, Major CCs, Cash, or PFC		3125 Orangethorpe Avenue	Anaheim	CA
Anaheim Headquarters (Socal Gas #13)	Public	24 Hrs	Socal Gas		1919 South State College Blvd	Anaheim	CA
San Diego Gas & Electric: North Coast	Public	24 Hrs	SDG&E		5016 Carlsbad Avenue	Carlsbad	CA
Chula Vista City School District	Public	6:30am - 5:00pm Weekdays	SDG&E		84 East J' Street & Hilltop Drive	San Diego	CA
UNOCAL: Industry 1	Public	24 Hrs	Socal Gas or PFC		948 South Azusa Avenue	City of Industry	CA
Compton (Socal Gas #1)	Public	24 Hrs	Socal Gas		701 North Bullis Road	Compton	CA
US Post Office, Corona	Public	24 Hrs	Socal Gas or PFC		414 West Grand Boulevard	Corona	CA
Naval Air Station Exchange	Public	6:00am - 7:00pm daily	SDG&E		Alameda Blvd & 2nd Street	Coronado	CA
Energy Resource Center (Socal Gas #11)	Public	24 Hrs	Socal Gas		9420 East Firestone Blvd	Downey	CA
UNOCAL: El Cajon	Public	24 Hrs	SDG&E		1090 W. Main Street & Marshall A	El Cajon	CA
City of El Centro	Public	24 Hrs	Socal Gas		970 North 4th Street	El Centro	CA
Shell Oil: Enchiliza	Public	24 Hrs	Shell, Major CCs, or Cash		160 Enchiliza Blvd	Enchiliza	CA
Shell Oil: Escondido	Public	24 Hrs	Shell, Major CCs, or Cash		780 W. El Norte Parkway & Nutme	Escondido	CA
County Sanitation Districts of Orange County	Public	24 Hrs	Socal Gas		10844 Ellis Avenue	Fountain Valley	CA
Garden Grove (Socal Gas #2)	Public	24 Hrs	Socal Gas		12631 Monarch Street (access Ind	Garden Grove	CA
Glendale (Socal Gas #8)	Public	24 Hrs	Socal Gas		5610 San Fernando Road	Glendale	CA
US Post Office: Huntington Beach	Public	24 Hrs	Socal Gas or PFC		6771 Warner Avenue (Fueling at R	Huntington Beach	CA

CNG FUELING STATIONS

Fueling Station Name	Access Type	Hours	Fuel Card Type	G K a e t e ?	Location	City	State
Sunline Indio	Public	24 Hrs	SoCal Gas		83255 Highway 111	Indio	CA
City of Irvine	Public	24 Hrs	SoCal Gas or PFC		15029 Sand Canyon Road	Irvine	CA
Antelope Valley School District	Public	24 Hrs	SoCal Gas or PFC		670 West Avenue, L8	Lancaster	CA
El Dorado Park (Long Beach Gas Company #4)	Public	7:am to 4:30PM Weekdays	Any California CNG Card		2750 Studebaker Road	Long Beach	CA
Spring Street (Long Beach Gas Company #1)	Public	24 Hrs	Long Beach Gas		2400 East Spring Street	Long Beach	CA
LB Police Dept. (Long Beach Gas Company #2)	Public	24 Hrs	Long Beach Gas		400 West Broadway	Long Beach	CA
Port/SERRF Plant (Long Beach Gas Company #3)	Public	7:00am to 5:00pm Weekdays	Any California CNG Card		120 Henry Ford Avenue	Long Beach	CA
LAX	Public	24 Hrs	PFC		104th Street & Aviation Blvd	Los Angeles	CA
SoCal Gas: Olympic	Public	By Appointment Only	SoCal Gas		2424 East Olympic	Los Angeles	CA
Shell Oil: Olympic	Public	24 Hrs	Shell		1520 South Santa Fe Avenue	Los Angeles	CA
LA County: County Internal Services Division	Public	24 Hrs	SoCal Gas or PFC		1100 North Eastern Avenue	Los Angeles	CA
City of Thousand Oaks (Newbury Park)	Public	24 Hrs	SoCal Gas		1983 Rancho Conejo Blvd	Newbury Park	CA
City of Ontario	Public	24 Hrs	SoCal Gas		14235 South Bon View Avenue	Ontario	CA
UPS (LNG & CNG)	Public	24 Hrs	FleetStar or CFN		1735 South Turner Avenue	Ontario	CA
Oxnard (SoCal Gas #6)	Public	24 Hrs	SoCal Gas		1600 Patton Court	Oxnard	CA
MacValley Oil	Public	24 Hrs	FleetStar or Cash		100 Del Norte Blvd	Oxnard	CA
Waste Management of the Desert	Public	24 Hrs	SoCal Gas		41575 Eclectic Street	Palm Desert	CA
Palm Springs Airport	Public	24 Hrs	SoCal Gas		3400 E. Tahquitz Canyon Way (Air)	Palm Springs	CA
Pico Rivera (SoCal Gas #9)	Public	24 Hrs	SoCal Gas		8101 South Rosemead Blvd	Pico Rivera	CA
POWAY School District	Public	6:30am - 5:00pm Weekdays	SDG&E		13626 Twin Packs Road & Midland	Poway	CA
Rancho Cucamonga: SBWV	Public	24 Hrs	SoCal Gas or PFC		12672 4th Street	Rancho Cucamonga	CA
Riverside (SoCal Gas #5)	Public	24 Hrs	SoCal Gas		4495 Howard Ave	Riverside	CA
County of San Bernardino	Public	24 Hrs	SoCal Gas or PFC		210 North Lena Road	San Bernardino	CA
Shell Oil: Airport	Public	24 Hrs	Shell, Major CCs, or Cash		2521 Pacific Highway	San Diego	CA
San Diego Gas & Electric: Service Center	Public	24 Hrs	SDG&E		5488 Overland Avenue & Clairmont	San Diego	CA
San Diego Gas & Electric: Miramar Yard	Public	24 Hrs	SDG&E		6875 Consolidated Way & Commel	San Diego	CA



**ALAMEDA COUNTY****CONTACT/TITLE****TELEPHONE NO**

Berkeley Unified  
1310 A 9th St.  
Berkeley 94710  
(510) 644-6182

Bernadette Cornier  
Trans. Mgr.

(510) 644-6182

Kevin Contreres  
Shop Sup.

(510) 644-8951

Castro Valley Unified  
Canyon Middle School  
Castro Valley 94546  
(510) 537-3000 Ext. 63 or 64

Paula Aguilar  
Trans. Supv.

(510) 881-5271

Fremont Unified School Dist.  
43770 Grimmer Blvd.  
Fremont 94538  
(510) 657-1450 x3006

Lynn Georg  
Lead Mechanic

(510) 657-1450 press 6

Linda Hill  
Trans. Dir.

Hayward Unified School Dist.  
24400 Amador St.  
Hayward 94540  
(510) 784-2666

Vinzent Andrade  
Manager

(510) 784-2666 ext. 2540  
(24 hr. security)

Rick Paiva  
Mechanic

(510) 784-2673

New Haven Unified  
3636 Smith St.  
Union City 94587  
(510) 471-5559

Wayne Harris  
Trans. Manager

(510) 471-5559

Regina Hartim  
Asst. Manager

(510) 471-5559

Raymond Yardley  
Lead Mechanic

(209) 538-8511

Newark Unified School Dist.  
37370 Birch Street Bld B  
Newark 94560  
(510) 794-2141

Kathy Reegopoulos  
Administrative Assistant

(510) 8181-4271 Trans. Dept.  
(510) 489-8097

Paul Manley  
MOT

(510) 774-5724

Pleasanton Unified School Dist.  
4750 First St.  
Pleasanton 94566  
(925) 426-4410

Will Macdedo  
Dir. Bldgs. Trans.

(925) 443-3287

Ron Mahler  
Trans. Supervisor

(925) 294-8514

St. Mary's College High  
Peralta Park  
Berkeley 94706  
(510) 232-1897

Bob Anderson

San Lorenzo Unified  
15510 Usher St.  
San Lorenzo 94580

James Ferreira

(510) 317-4857

**AMADOR COUNTY****CONTACT/TITLE****TELEPHONE NO.**

Amador County Unified  
217 Rex Avenue  
Jackson 95642  
(209) 223-0871

Larry Critchfield  
Trans. Dir.

(209) 223-1538

Douglas Polk  
Instructor

(209) 223-0871

<b>BUTTE COUNTY</b>	<b>CONTACT/TITLE</b>	<b>TELEPHONE NO</b>
Butte College 3536 Butte Campus Drive Oroville 95965 (530) 895-2352	Richard Carver Trans. Supv.	(530) 521-7199 (C)
	John Morris Head Mechanic	(530)873-4796 (H)
Chico Unified 1163 E. 7th St. Chico 95926 (530) 898-3000	Angie VanBlaricom Coordinator	(530)891-3135 Transportation (530) 342-7611 (H)
	Wayne Murry Trans Manager	
Durham Unified P. O. Box 300, Putney Dr. Durham 95938 (530)895-4679	Dave York Trans. Director MOT	(530)895-4679 (530)342-9506 (H)
	Pete Monnot Mechanic/. Dispatch	(530) 895-4678 Transportation (530) 899-3323 (H)
Gridley Union 429 Wilson St. Gridley (530)846-2309	Al Olsen Dir. Maint/Trans	(530)846-2309 (530)846-4896 (H)
Golden Feather Union 11679 Nelson Bar Rd. Oroville 95965 (530)533-3833	Bob Saville Trans. Supv.	(530) 533-6163 (530)534-1124 (H)
	Chuck Marino Head Mechanic	(530) 534-8423 (H)
Oroville Union 2139 Washington Ave. Oroville 95965 (530)538-2300	Roger Love Trans. Supv.	(530)538-2300 ext 108 (530)534-3728 (H)
	John Sheldon Mechanic	(530)589-4387 (H)
Palermo Union School Dist 2261 Esperanza Ave. Palermo 95968 (530)533-4842	Rhonda Herd Head Driver/Super.	(530)533-1020
Paradise Unified 6696 Clark Rd Paradise 95969 (530)872-6484	Tom Vanwagner Dir. Of Trans	(530)873-1551 (H)
	Brian Churchill Shop Foreman	(530) 891-8918 (H)

Pioneer Union School Dist  
286 Rockefeller Rd  
Berry Creek 95916  
(530) 589-1633

Cliff Lantz  
Trans. Supv.

(530)589-1633  
(530)589-0366 (H)

Jeff Nelson  
Jeff Nelson

530)  
(530) 589-2061

Sierra Christian Academy  
P. O. Box 307  
Durham  
(916) 343-2515

Rev. J. Clark Lambeth  
Supt./Bus Driver/  
Teacher

(916) 343-2515

<b>CALAVERAS COUNTY</b>	<b>CONTACT/TITLE</b>	<b>TELEPHONE NO.</b>
Bret Harte Union High School 364 Murphy Grade Rd Altaville 95221 (209) 736-2507	Robert Perovich Head Mechanic	
	Patti Reid Director of Transportation	(209) 736-2067 (209) 736-2918 (H)
Calaveras Unified 3304 B Highway 12 San Andreas 95249 (209) 754-2179	Renee Link Transportation Manager	
	Terry Cooper Fleet Manager	(209) 754-4604
Vallecito Union Elem. P. O. Box 807 Murphys 95247 (209) 728-3496		

**COLUSA COUNTY****CONTACT/TITLE****TELEPHONE NO**

---

Pierce Joint Unified  
940 Wildwood Rd.  
Arbuckle 95912

Duffy Bailey  
Dir./Mech.

(530) 476-2892 ext 103  
(Dist. Office)

Maxwell Unified  
P.O. Box 788  
515 Oak St.  
Maxwell, CA 95955

Myron Hord  
Driver

(530) 438-2052 ext 12145  
(530) 682-1627 ©

<b>CONTRA COSTA COUNTY</b>	<b>CONTACT/TITLE</b>	<b>TELEPHONE NO.</b>
Acalanes Union High School 3210 Stanley Blvd. Lafayette 94549 925- 935-6360	Kathy Garcia Supervisor	(925)- 376-1020 (925)260-5029 ©
	Elvin Watkin	(925) 376-2600 ext 110
Antioch Unified 510 "G" St. Antioch 94509 925- 757-7110, Ext. 212,213	Fran Montgomery Trans. Supv.	(925)- 757-7110
Durham Transportation 959 Detroit Ave. Concord 94518 925- 686-3391	Satendra Narayan Maint. Supv.	(925) 686-3391
Laidlaw Transit, Inc 436 Parr Blvd. Richmond 94801 510- 237-6677	Brian Rufford District Manager	(510) 237-6365 (510) 237-6677 (after 5:00 p.m.)
Liberty Union High School 850 Second St. Brentwood 94513 925- 634-2700; 634-3298	Steve Mcelhanev Trans. Dir.	925-634-2700
	Steve Nickerson	(925) 634-2241 Shop
Mt. Diablo Unified School Dist. 1490 Gasoline Alley Concord 94520 925-825-7440	Fred Confetti Trans. Supv.	(925)-825-7440 X 3709 (925)-754-2477
	Susan Simpson Driver Trainer	(925)-825-7440 x 3708
	Connie Prasky Driver Trainer	(925)-825-7440 x 3714
	John Clark Mechanic	(925) 8257440 x 3706 (925) 798-2269 (925)-978-1300 (H)



**DEL NORTE COUNTY****CONTACT/TITLE****TELEPHONE NO.**

Del Norte Unified  
301 W. Washington Blvd.  
Crescent City 95531  
(707) 464-6141

Pat Jensen  
Trans. Supv.

(707) 464-0251  
(707)464-5401 (H)  
(707)951-6638 PGR)  
(707) 464-4750

Jess Bigham  
Mechanic

Clyde Cook  
Mechanic

(707)464-7824 (H)

Ken Train  
Mechanic

(707)464-4315

Ruth Cardenas  
Bus Driver Instructor

(707) 458-9610

EL DORADO COUNTY	CONTACT/TITLE	TELEPHONE NO.
Black Oak Mine U.S.D. 6540 Wentworth Springs Rd. Georgetown 95634	Al DeLaRosa Trans. Supv.	530- 333-8325
Buckeye Union P. O. Box 547 Shingle Springs 95682 530- 677-5023	Howard Coleman Head Mechanic	
Camino Union 3060 Snows Road Camino 95709 530- 622-5203		
El Dorado Union High School 4675 Missouri Flat Rd. P. O. Box 1450 Diamond Springs 95619	June Jones Trans. Dir.	530-622-6306 ext. 342
	Mary Jo Byrnes Driver/Trainer	530- 622-6306 ext. 247
	Robin Bement Lead Mechanic	530-622-6306 ext. 246
Gold Oak Union 3171 Pleasant Valley Rd. Placerville 95667 (530) 644-3750 Transportation	Stacy Baraque Supervisor	(530) 644-3750 Transportation (530) 626-3155
	Mike Lightfoot Mechanic	(530) 644-3093 (H)
Gold Trail Union & Rescue 889 Cold Springs Rd. Placerville 95667	Toby Sutton Supervisor	(530) 626-2595 (916) 984-1255
Lake Tahoe Unified P. O. Box 14426 South Lake Tahoe 95702 (530) 543-2219	Gloria Helms Supervisor	(530) 543-2219
	Alan Petrell	(530) 543-2217
Mother Lode Union 3783 Fornie Road Placerville 95667	Mark Clover Supervisor	(530) 626-4831

Placerville Union  
1032 Thompson Way.  
Placerville 95667

Laree

(530) 626-7636

Pollock Pines Elem.  
6181 "A" Pine St.  
Pollock Pines 95726

Stacy Baraque  
Supervisor

(530) 644-3750

Clint Stence  
Mechanic

(530) 644-3750

Rescue Union  
2390 Bass Lake Rd.  
Rescue 95672

Toby Sutton  
Supervisor

(530) 626-2595

(916) 984-1255

<b>FRESNO COUNTY</b>	<b>CONTACT/TITLE</b>	<b>TELEPHONE NO.</b>
American Union School Dist. 2801 W. Adams Fresno 93706 (559)-867-3536	Leroy Futrell Trans. Dir.	559-266-5915
Big Creek P. O. Box 98 Big Creek 93605 559-893-3314	Tom Capuchino Trans. Dir.	
Burrel Union 16704 S. Jameson Burrel 93607 559- 866-5634	Tim Bybee Head Cust./Driver  Chris Sisneroz	559-866-5273 559-779-0116
Cantua Creek Box 618 Cantua Creek 93608 559- 698-7817	Thelma Neri Trans. Supv.	559-846-5807
Caruthers Union P. O. Box 7 Caruthers 93609 559-864-3262	*see Southwest Transportation Agency	
Central Unified School Dist. 3075 W. Nielson Fresno 93722 559-276-5243	Leon Lake Trans. Dir.  Dick Dailey Mechanic	559-441-1799 559*647-8566 (cell)  559-297-8173
Clay Joint Elementary 12449 S. Smith Kingsburg 93631 559- 897-4185	Burneall Ekberg Trans. Dir.	559- 638-8948
Coalinga-Huron Unified 1512 Sunset Ave. Coalinga 93210 559-935-7519	Don McFarlin Supervisor  Mechanic Albert Oliva	559-647-6892 (cell)   559-816-2282 (cell)

Dos Palos Oro Loma Unified 1701 E. Blossom Dos Palos 93620 559-392-2131	Floyd Wilson Trans. Dir.	559- 387-4137
	Lonnie Nichols Mechanic	559-392-3717
Firebaugh-Las Deltas Unif. 1600 - 16th St. Firebaugh 93622 559-659-2801	Supv. Oper.	559- 659-3116
	Angel Saucedo	559659-2801
Fowler Unified School Dist. 658 E. Adams Ave. Fowler 93625 559-834-2818	Joe Acosta Head Mechanic	559-834-3653
Kerman Unified School Dist. 14656 W. "D" St. Kerman 93630 559- 842-2203	Walt Fonseca Dispatcher	559- 217-3923
	Mike Vasquez Mechanic	559-846-97454
Kings Canyon Unified S. D. 675 W. Manning Ave. Reedley 93654 559- 637-1220	John D. Clements Trans. Dir.	559- 638-9477
	Allen Moore Lead Mechanic	559-787-2890
Kingsburg Jt. Union H.S. 1900 - 18 Ave. Kingsburg 93631 559- 897-3070	Thomas Medellin Trans. Dir.	559-896-4712 hm.
	Lupe Macias Mechanic	
Kingsburg Elem. School Dist. 1310 Stroud Ave. Kingsburg 93631 559-897-3571	Ed Andrada Trans. Dir.	559-897-1406
Mendota Unified 250 S. Derrick P. O. Box 68 Mendota 93640 559- 655-3433	Angel Vallejo Head Driver/Trainer	559-655-4777

Monroe Elementary  
11842 S. Chestnut Ave.  
Fresno 93725  
559- 834-2895

See: Southwest Transportation

Pacific Union School District  
2065 E. Bowles Ave.  
Fresno 93725  
559- 834-2533

See: Southwest Transportation

Pine Ridge School Dist.  
45828 Auberry Rd.  
Auberry 93602  
559- 841-8599

Timm Robertson (559-841-8599)  
Trans. Manager

Raisin City School  
6425 W. Bowles  
Raisin City 93652  
559-233-0128

See: Southwest Transportation

Reef-Sunset Unified School Dist  
205 No. Park Avenue  
Avenal 93204  
(559)386-5388  
(559)386-5388 FAX

Joel Cooley H(559)891-9302  
Trans. Supervisor C(559)285-5738  
  
Fernando Aenna H(559)386-5080  
Lead Mechanic P(559)488-5325

Sanger Unified  
1905 7th St.  
Sanger 93657  
559-875-7170

Joel Cooley 559-351-3639  
Manager

Selma Unified  
3036 Thompson Ave.  
Selma 93662  
559-896-6500

Wade Smith (559) 352-8258  
Trans. Dir.

Jerry Gallyer 559-347-0318  
Mechanic 559-905-3371

Sierra Unified  
33326 N. Lodge Rd.  
Tollhouse 93667  
559-855-8316

Gary Allen 559-868-3362 hm.  
Trans. Dir. 559-696-2345

Hal Ward 209-559-6205  
Supervisor

Southwest Transportation  
P.O. Box 785  
Riverdale 93656  
559-867-3536

Kirk Hunter 559-906-0337  
Trans. Dir.

Tranquility Union High  
6052 Juanche St.  
P. O. Box 457  
559-698-7817

Washington Union High School  
6041 S. Elm  
Fresno 93706  
559-485-8805

See: Southwest Transprotation

West Fresno  
2888 S. Ivy  
Fresno 93706  
559-495-5620

Roy Ellis 559-352-1771 (cell)  
Tran. Supervisor

Will Portis 559-906-3090  
Director of Operations & Maintenance

West Park Elementary  
2695 S. Valentine Ave  
Fresno 93706  
559- 233-5431

Bernard Hanlon 559-233-6501  
Superintendent

Harry Sanchez 559-264-5194  
Driver

GLENN COUNTY	CONTACT/TITLE	TELEPHONE NO.
Hamilton Union Elementary 277 Capay St. Hamilton City 95951 530-826-3474	Mike Thomas	
Hamilton Union High P. O. Box 488 Hamilton City 95951 530- 826-3261	Larry R. Crane Head Maint./Trans.	530- 826-3587
	Jeff Joseph	530-826-3587
Stony Creek Jt. Unified P. O. Box 68 Elk Creek 95939 530-968-5361	Ed Mueller Trans. Supv.	



HUMBOLDT COUNTY	CONTACT/TITLE	TELEPHONE NO.
Arcata School Dist. 1897 "S" St. Arcata 95521 (707) 822-2614 (707) 822-0351	Kelly Clark Mechanic/Disp.	(707) 822-8902
Fortuna Union High School. Dist. 379 12Th St. Fortuna 95540 (707) 725-4461, Ext. 4024 - 3057	Barbara Lake Trainer	(707)725-3627 H
Humboldt Co. Office Of Ed. 901 Myrtle Ave. Eureka 95501 (707) 445-7089	Tom McGinnis Supervisor	(707)445-7089 W (707)725-0325 H
Klamath-Trinity Unified P. O. Box 1308 Hoopa 95546 (530)625-4342	Frank Starkey Supervisor	(530)625-4118 W (530)625-1180 H
	Eddie Coleman Trainer	(530)625-4648 H
McKinleyville Union School P. O. Box 2067 McKinleyville 95521 (707) 839-2584/839-1549	Scott Oilar Trans. Supv.	(707) 839-3093
Northern Humboldt Union High 905 6Th St. 5201 Boyd Rd.-(Trans. Dept) Arcata 95521 (916) 822-4211/822-4821	Gary Ray Director	(707) 839-0414
	Gene Brannon Mechanic	(707) 839-1756
	Dale Barnett Dispatcher	
Pacific Union 3001 James Rd. Arcata 95521 (707) 822-4619	Susan Metten Supervisor	
Southern Humboldt Unified 286 Sprowel Creek Rd. Garberville 95440 (707) 943-3148	Donna Anderson Trans. Coordinator	(707) 943-3648 W (707)943-3636 H

<b>IMPERIAL COUNTY</b>	<b>CONTACT/TITLE</b>	<b>TELEPHONE NO.</b>
Brawley School Dist. 261 "D" St. Brawley 92227 (760) 344-8686	Chuck Numemacher Director of Maint. & Operations	(760) 344-1025
Calipatria Unified 601 W. Main St. Calipatria 92233 (760) 348-2712; 348-2892	Jim Spelling Trans. Supv.	(760) 348-5656
Central Union High 1001 Brighton Ave. El Centro, CA 92243 (760) 352-2471	Ray Platero Supervisor	(760) 352-5309
	Joe Marnca Superintendent	(760) 352-7367
El Centro School Dist. 1256 Broadway El Centro 92243 (760) 337-8499	Salvador Ramirez Maint./Trans.	(760) 353-9200 x 14
Holtville Unified 621 E. 6Th St. Holtville 92250 (760) 356-2658	Richard Layton Trans. Supv.	(760) 356-1955
Imperial Unified 10Th & E Sts. Imperial 92251 (760) 355-3206 6am - 4pm	Frank Thomas Trans. Supv.	(760) 355-3206
McCabe Union School Dist. 701 W. McCabe Rd. El Centro 92243 (760) 352-5443		
Meadows Union Elem. 2059 Bowker Rd. El Centro 92243 (760) 352-7512	Ron Jesse Maint./Foreman	

Seeley Union School  
1812 W. Rio Vista  
Seeley 92273  
(760) 352-3571

Jesse Nazarro  
Cust./Supv./Driver

Westmorland Union Elem.  
200 South C St.  
Westmorland 92281  
(760) 344-4364

Inacio Garcia  
Trans. Supv.

(760) 355-1266  
(760) 897-7999 pgr

<b>INYO COUNTY</b>	<b>CONTACT/TITLE</b>	<b>TELEPHONE NO.</b>
Bishop Union High School 301 N. Fowler Bishop 93514 (760) 873-4275	Cindy Slee Dir./Main./Oper	(760) 872-4931
Lone Pine Unified P. O. Box 159 301 South Hay St. Lone Pine 93545 (760) 876-5579	Ed Green Head Driver	(760) 876-4535

KERN COUNTY	CONTACT/TITLE	TELEPHONE NO.
-------------	---------------	---------------

Arvin Union Elem. 737 Bear Mountain Blvd. Arvin 93203 (661) 854-854-6500 FAX (661) 854-2362	Norman Coffee Trans. Dir.	(661) 854-6531
---	------------------------------	----------------

Beardsley Elementary 1001 Roberts Lane Bakersfield 93308 (661) 399-5586 FAX (661) 393-5965	Russ Wood Dir MOT	(661)392-1228
--	----------------------	---------------

Belridge Elementary 19447 Wagon Wheel Rd. Mc Kittrick 93251 (661) 762-7381 FAX (661) 665-4358	Rito Lopez	(661) 762-7381
---	------------	----------------

Buttonwillow Union School District 400 McKittrick Hwy. Buttonwillow 93206 (661) 764-5248 FAX (661)764-5165	Wayne Diver Superintendent	
--	-------------------------------	--

Delano Jt Union High School Dist 1747 Princeton St. Delano 93215 (661) 720-4000  FAX (661) 721-9390	Les Lucas Manager Transp	(661) 725-4191
--	-----------------------------	----------------

Delano Union School District 1405 12th Ave. Delano 93215 (661) 721-5015 FAX (661) 721-5088	Roy Rico Dir./M.O.T.	(661) 721-5015 (661) 979-7916 (cell)
--	-------------------------	---

Di Giorgio School District 19405 Buena Vista Blvd. Arvin 93203 (661) 854-2604 FAX (661)854-8746	Tony Boado M.O. Supervisor	(661) 854-2604
---	-------------------------------	----------------

Edison Elementary  
9600 Eucalyptus St.  
Bakersfield 93306  
(661) 366-1263  
FAX (661) 366-9411

Sandy Austin  
Dir. Transportation

Elk Hills School District  
501 Kern St  
Tupman 93276  
(661) 765-7431  
FAX (661)765-4583

Tommy Moody  
Supervisor MOT

El Tejon Unified  
P.O. Box 876  
Lebec 93243  
(661) 248-6323  
FAX (661) 248-6714

Bob Morse  
Trans. Dir.

Fairfax School District  
1500 S. Fairfax Rd.  
Bakersfield 93307  
(661) 366-7248  
FAX (661) 366-1901

Martin Taylor  
Supervisor MOT

(661) 366-7248

Fruitvale School District  
2114 Calloway Dr.  
Bakersfield 93312  
(661)589-8770 x 214  
FAX (661)587-9326

Del Watts  
Dir./M.O.T.

(661)589-8770  
(661) 201-0901 (cell)

Jim Cole

(661) 2010740 (cell)

General Shafter School District  
1316 Shafter Rd.  
Bakersfield 93313-9677  
(661) 831-3605  
FAX (661)831-8541

Tony Rodenburg  
Dir of Operation/Trans

(661) 831-3605

Greenfield Union School District  
1624 Fairview Rd.  
Bakersfield 93307  
(661) 837-6030  
FAX (661) 832-2873

James Wallace  
Dir of Transportation

(661)837-6037

Kern County Super. of Schools  
1300 17th St.  
Bakersfield 93301-4533  
(661) 852-5800  
FAX (661) 852-5829

Don Fowler  
Adm MOT (661) 393-1869-hm.

Doug Snyder  
Director (661) 398-5614

Scott Bohannon  
Fleet Manager (661) 589-5990

Kern Union High  
3701 E. Belleterrace Suite C  
Bakersfield 93307  
(661) 827-3199  
FAX (661) 827-3300

Bud Bankston  
Trans. Dir. (661)588-4774 (HM)

Marsa Miller  
Op. Super

Kernville Union School Dist.  
5104 Lake Isabella Blvd.  
Lake Isabella 93240  
(760) 379-3651  
FAX (760) 379-3812

Dennis Miller (760) 379-4411

Lakeside Union Elementary  
14535 Old River Road  
Bakersfield 93311  
(661) 831-3503  
FAX (661) 831-7709

Brian Prine (661) 831-o492

Lamont Elementary  
8201 Palm Ave.  
Lamont 93241  
(661)845-3984  
FAX (661) 845-0689

Helen Ramsey  
Trans. Dir. (661) 845-3984

Dave Beckman  
Dir MOT

Linns Valley-Poso Flat  
P.O. Box 399  
Glennville 93226  
(661) 536-8878

Sherry Culbertson  
District Supt. (661) 536-8811

Lost Hills Union School District  
P.O. Box 158  
Lost Hills 93249  
(661) 797-2626  
FAX (661) 797-2580

Kenneth Linger  
Dir./M.O.T. (661) 797-2626

Maple School District 29161 Fresno Ave. Shafter 93263-9719 (661) 746-4439 FAX (661)746-4765	James Silas Dir./M.O.T.	(661) 393-7981
Maricopa Unif School Dist 955 Stanislaus St. Maricopa 93252 (661) 769-8231 FAX (661)769-8168	Darwin Ellis	(661) 769-8231
McFarland Union Elem. 601 Second St. McFarland 93250 (661) 792-2333 FAX (661) 792-6563	Robert Strand Dir MOT	(661) 792-2333
McKittrick School District P.O. Box 277 McKittrick 93251 (661)762-7303 FAX (661) 762-7283	Jon Rubadeau Trans & Maint	(661) 301-5407 (Cell)
Midway School District P.O. Box 39 Fellows 93224 (661) 768-4344 FAX (661)768-4746	Billy Ross Super MOT	(661) 768-4344
Mojave Unified School District 3500 Douglas Ave. Mojave 93501 (661)824-2047 x26 FAX (661) 824-2966	Susan Holder Dir of Trans	(661) 824-2047 x26
Muroc Joint Unified School Dist 26653 Prospect St. Baron 93516 (760)762-5882 FAX (760)762-6886	Jim McLaughlin Dir. Trans/Safety	(760)762-5882 (760) 250-3207 (cell)



Panama/Buena Vista Union  
4200 Ashe Rd.  
Bakersfield 93313  
(661) 831-8331x163  
FAX (661) 398-2141

Wes Mitchell  
Dir./M.O.T.

(661) 831-8331x163

Pond Union School District  
P.O. Box 1527  
Pond 93280  
(661) 792-2545  
FAX (661)792-2303

Frank Bervel  
Trans. Dir.

(661)792-2505 (H)

Rio Bravo-Greeley Union Elem.  
6521 Enos Lane  
Bakersfield 93312  
(661) 589-2696  
FAX (661) 589-2218

Chuck White  
Trans. Dir.

(661) 589-2696

Rosedale Union School Dist  
2553 Old Farm Road  
Bakersfield 93312  
(661) 588-6010  
FAX (661)588-6009

Michael Cerri  
Mgr. Maint/Oper

(661) 588-6010

Semitropic Elementary  
25300 Highway 46  
Wasco 93280  
(661) 758-6412  
FAX (661)758-6412

Sal Garcia  
Head of Maintenance

(661) 758-6412

Sierra Sands Unified SD  
921 E. Inyo Kern Road  
Ridgecrest 93555  
(760) 446-2012

Reid Baker  
Trans. Sup.

(760) 382-6306 (cell)  
(760) 377-5788

FAX (760) 446-5034

South Fork Union School Dist  
6401 Fay Ranch Rd.  
Weldon 93283  
(760) 378-4058  
FAX (760) 378-3046

Tim Gordon  
Super MOT

(760)378-4058 shop

Southern Kern Unified SD  
P.O. Drawer CC  
Rosamond 93560  
(661)256-5070  
FAX (661)256-1247

Carol DiCicco  
Trans. Sup.

(661)256-5070

Standard Elem.  
1200 N. Chester Ave.  
Bakersfield 93308-3594  
(661) 392-2109  
FAX (661) 392-0681

Darrel Hawley  
Dir Facilities/Trans

(661) 392-2109

Taft City School District  
820 N. Sixth Street  
Taft 93268  
(661) 765-4344  
FAX (661)765-6252

Don Maxwell  
Dir./M.O.T.

(661) 765-6397

Taft Union High School  
701 Seventh St.  
Taft 93268  
(661) 763-2300  
FAX (661)763-1445

Paul Linder

(661)763-2321

Tehachapi Unified School Dist  
400 So Snyder Ave  
Tehachapi 93561  
(661) 822-2115  
FAX (661) 822-2159

Janna McLaughlin  
Transportation Coord

(661) 822-2115

Jim Scott  
Shop Foreman

(661) 822-2115

Vineland School District  
14713 Wedpatch Highway  
Bakersfield 93307-9114  
(661)845-3713  
FAX (661)845-8449

Stephen Greenfield  
District Super

(661)845-3713

Wasco Union School District  
639 Broadway  
Wasco 93280  
(661)758-7118  
FAX(661)758-7110

Marty Jones  
Dir MOT

(661)758-7118  
(661) 201-7358

Wasco High School District  
1900 Seventh St.  
Wasco 93280  
(661)758-7118  
FAX (661)758-7110

John Butler  
Trans. Dir.

(661)758-7403

**KINGS COUNTY****CONTACT/TITLE****TELEPHONE NO.**

Armona Union Elem.  
14045 Pima  
Armona 93202  
(209) 583-5000/583-5008

Corcoran Joint Unified  
1520 Patterson Ave.  
Corcoran 93212  
(209) 992-2235

(209) 992-3551

Delta View Joint Union Elem.  
1201 Lacey Blvd.  
Hanford 93230  
(209) 582-3122

Hanford Elem School District  
938 Katie Hammond Lane  
Hanford 93245  
(559)585-2248  
(559)585-2251 FAX

Richard Rose  
Program Manager

H(559)584-34090  
C(559)707-2601

Ed Woughter  
Mechanic

H(559)582-6945

Hanford Joint Union High  
8710 E. Lacey Blvd.  
Hanford 93230  
(559)582-6517  
(559)582-1162 FAX

Jim Black

Kings River-Hardwick Unified  
10300 Escelsior Avenue  
Hanford 93230  
(559)584-4475  
(559)585-1422 FAX

Amparo Attebery  
Program Manager

H(559)582-1435

Carl Domingues  
Director MOT

H(559)584-6243

Kit Carson Union Elem.  
9895 Seventh Ave.  
Hanford 93230  
(209) 582-2843

Robert Inabnit  
Trans. Supv.

(209) 582-2843

Lemoore High School  
857 Iona  
Lemoore 93245  
(209) 924-6640

Tim Grubb  
Trans. Supv.

(209) 582-3012

(209) 250-6134 cellular

Lester Anacleto  
Mechanic

(209) 924-0877

LAKE COUNTY	CONTACT/TITLE	TELEPHONE NO.
Kelseyville Unified School 3980 Gard St. Kelseyville 95451 (707) 279-1507	Michael Prather Trans. Dir.	(707) 279-4372 (H)
	Mary Lerch	(707) 279-8700 (H)
Konocti Unified School P. O. Box 6630 Clear Lake 95422 (707) 994-9473	Wayde Zuideweg Trans. Dir.	(707) 998-9548
	Aaron Griffin Mechanic	(707) 994-0804
Lakeport Unified 100 Lange St. Lakeport 95453 (707) 262-3022	David Norris Dir. Trans./Maint.	(707) 263-8540
	Roger Sonnenburg Mechanic	(707) 263-7357
Upper Lake Union High 9550 Clover Creek Rd. Upper Lake 95485 (707) 275-2326	Judie Hoyt Trans. Supv.	(707) 274-8269 (H)
	Keith Somers Mechanic	(707) 263-7397

**LASSEN COUNTY****CONTACT/TITLE****TELEPHONE NO.**

Big Valley School Dist  
P.O. Box 157  
Bieber 96009  
530-294-5266 (D.O.)  
530-294-5491 (Garage)

Debbie Walters  
Tran. Mgr.

(530) 294-5892 (H)

Keith Peterson  
Mechanic

(530) 294-5881(H)

Lassen Union High  
1324 Cornell St.  
Susanville 96130  
(530) 257-5280

Jay McKennon  
Trans. Supv.

530-257-5280 W  
530-257-4654 H

Al Christenson  
Mechanic

(530) 257-8109

Stan Birkett  
Dispatcher

530-257-2261 H

Westwood Unified Schools  
5th & Delwood  
Westwood 96137  
530-256-3295

Rosemary Kersh  
Head Driver

(530) 256-3295

<b>LOS ANGELES COUNTY</b>	<b>CONTACT/TITLE</b>	<b>TELEPHONE NO.</b>
ABC Unified 16700 South Norwalk Blvd. Cerritos 90703 (562) 809-7437	Sue Highland Trans. Supv.	(562) 755-0098 (cell)
Alhambra School Dist. 24 S. Marengo Ave. Alhambra 91801 (818) 308-2392	Brenda Hayes Trans. Mgr.	(818) 352-7190
	Martin Hall Head Mechanic	(818) 795-3045
Azusa Unified 546 S. Citrus Azusa 91702 (213) 967-6211	Horace W. Hart Supervisor	(213) 331-3181
	Pete Ramos Foreman	(213) 334-4073
Bonita Unified School Dist. 115 West Allen Ave. San Dimas 91773 (909) 599-6787/ 6796	Cheryl Seifert Trans. Supv.	(909) 971-8200 X 5260
Castaic Union Elem. P. O. Box 128 Castaic 91310 (805) 257-3550	Dean Gallion Trans. Supv. Bldgs./Grounds	
Covina-Valley Unified 519 E. Badillo Covina 91723 (213) 331-3371	Bill Prescotts Head Mech.	(626) 974-7600 ext. 2205 (626) 862-7600
Duarte Unified 1427 Buena vista Ave. Duarte 91010 (818) 358-1191, Ext. 274	Sandra Haynes Head Driver	
Eastside Union 6742 East Ave. "H" Lancaster 93535 (805) 946-1238	Richard Varner Asst. Superintendent of Support Services	
Harvard High School 3540 Ashwood Ave. Los Angeles 90066	Frank Hedge Trans. Supv.	(213) 398-2113

Las Virgenes Unified  
30961 W. Agoura Rd.  
Westlake Village 91361  
(213) 880-4404

Thomas Smitherman (805) 492-4358  
Supv.

Herman Ramsey (213) 835-5790  
Head Mech.

Long Beach Unified  
2655 Locust Ave.  
Long Beach 90806  
(562) 426-6176

Bernard Orendac  
Trans. Dir.

Paul Bailey (213) 594-9129  
Trans. Mgr.

David Lawson  
Fleet Maint. Supv. (213) 602-0296

Los Angeles Unified  
1425 S. San Pedro St  
Los Angeles 90051  
(213) 625-5261

(213) 576-8156

Montebello Unified  
123 S. Montebello Blvd.  
Montebello 90640  
(213) 721-6247

David R. Miller (909) 840-9714  
Trans. Dir.

Warren Swomley (213) 695-2647  
Lead Mechanic

Mt. San Antonio Comm. Coll.  
1100 N. Grand Ave.  
Walnut 91789  
(909) 594-5611

Larry Stout  
Trans. Supv.

Ponoma Unified  
800 S. Garey Ave.  
Ponoma 91766  
(909) 397-4700

Terry Edis (909) 880-3766  
Supv. Equip. Maint.

Central Dispatch (909) 629-7797

Pupil Transportation Co-op.  
9401 S. Painter Avenue  
Whittier 90605  
(562) 945-2581

Debbie LaJoie (562) 505-5173  
Dir. Of Transportation

Mechanics (562) 409-2581

Santa Monica-Malibu Unified  
1899 Olympic Blvd.  
Santa Monica 90404  
(310) 264-1856

Neil Abram (310) 264-1856  
Trans. Dir.

Torrance Unified  
2335 Plaza Del Amo  
Torrance 90509  
(213) 533-4224

Barry Purdy  
Trans. Supv.

(213) 592-2229

Walnut Valley Unified  
880 S. Lemon Rd.  
Walnut 91789  
(909) 595-1261

Len Hampton  
Trans. Supv.

(909) 839-1241

Ron Parks  
Mechanic

Westrey Schools (private)  
311 Culver Rd.  
Playa Del Rey 90291  
(213) 822-2451

Michael Suzuki  
Trans. Supv.

(213) 391-4810

Wm. S. Hart Union High  
21515 Redview Dr.  
Santa Clarita 91351  
(805) 251-0091

Gary A. Smith  
Co-Or./Trans.

(805) 323-2795  
(805) 259-0096



<b>MADERA COUNTY</b>	<b>CONTACT/TITLE</b>	<b>TELEPHONE NO.</b>
Bass Lake Jt. U. Elem. S. D. P.O. Box 395 Oakhurst 93644 (559) 642-1555	Terry Harr Trans. Dir.  Del Myers Mechanic	(559) 642-7703 (cell)
Chawanakee J.S.D. P.O. Box 400 North Fork 93643 (559) 877-7144	Mark Logee Trans. Supv.  Marrin Wallace Mechanic	(559) 960-9241  (559) 877-7724
Coarsegold Union School District P.O. Box 338 Coarsegold 93614 (559) 683-2108	Mary Brown Trans. Dir.	
Madera Unified 1902 Howard Rd. Madera 93637 (559) 673-2288	Jeff Smith Fleet Maint. Mgr.  Delores Sanchez Fleet Oper./Mgr.	(559) 647-0176
Raymond-Knowles Union Elem. P. O. Box 47 Raymond 93653 (559) 689-3336	Tom Alcock Superintendent/Principal	
Yosemite Union High S. D. 50200 Road 427 Oakhurst 93644 (559) 683-4667	George Weinbrenner Trans. Dir.	(209) 683-7558

MARIN COUNTY	CONTACT/TITLE	TELEPHONE NO.
Bolinas-Stinson Union Elem. Star Rt. Bolinas 94924 (415) 868-1603	Sarah Pusey Superintendent/Principal	
	Doug Robinson Instructor	(415) 868-0809
Dixie School Dist. 121 Marinwood San Rafael 94903 (415) 492-3777	Mike Schulze Supt./Mech.	(415) 492-3187
	Marie Peixotto Supv./Dispatcher	(415) 456-2018
Marin Co. Office of Education 200 Tamal Plaza Suite 528B Corte Madera 94925 (415) 924-5455	Steve Schroeder Trans. Sup.	(415) 485-5200
Novato Unified School Dist. 819 Olive Ave. Novato 94947 (415) 892-1598	Sandy Paine Supervisor	
	Dean Cudia Shop Supervisor	
San Rafael City Schools 225 Woodland Ave. San Rafael 94901 (415) 485-2300	Laidlaw MaryAnn Archuleta Marin Supervisor	
Shoreline Unified P. O. Box 198 26701 Hwy. #1 Tomales 94971 Bus Garage: (707) 878-2221 Dist. Off.: (707) 878-2226	Richard A. Burgi Trans. Dir.	(707) 878-2221
	Willie Warren Mechanic	(707) 865-2949

**MARIPOSA COUNTY****CONTACT/TITLE****TELEPHONE NO.**

---

Mariposa County Unified S. D.  
P. O. Box 8  
Mariposa 95338  
(209) 742-0265

William Loucks  
Trans. Dir.

(209) 966-4864

Charles Wildt  
Mechanic

(209) 966-6237

<b>MENDOCINO COUNTY</b>	<b>CONTACT/TITLE</b>	<b>TELEPHONE NO.</b>
Fort Bragg Unified 312 S. Lincoln St. Fort Bragg 95437 (707) 961-2850	John Griffiths Trans. Sup.	(707) 937-2930
	John Shannon Mechanic	(707) 964-3021
Mendocino Unified 44141 Little Lake Rd. Medocino 95460 (707) 937-5868	Hank Dahl Trans. Supv.	(707) 937-2877
	David Nielson Mechanic	(707) 964-2724
Point Arena Joint Union High Point Arena 95468 (707) 882-2863	Joan Slenaker Trans. Supv.	(707) 884-3794
Potter Valley Comm. Unified P. O. Box 219 Potter Valley 95469 (707) 743-1947	Earl Preffer Driver Trainer	(707) 743-1180
	Sandy Preffer Dispatcher	(707) 743-1180
Ukiah Unified 925 N State Street Ukiah 95482 (707) 463-5234	Steve Turner Trans. Dir	(707) 462-6753
	Carl Howe Trainer/Coordinator	(707) 463-2250
	Larry Griffin Mechanic Foreman	(707) 462-6725
Willits Unified 618 S. Main Street Willits 95490 (707) 459-5111/459-5314	Sandy Eddy Trans. Supv.	(707) 459-3588
	Chuck Scarberry Mechanic	(707) 459-6600

MERCED COUNTY	CONTACT/TITLE	TELEPHONE NO.
Atwater Elem. School Dist. 1850 Juniper Ave. Atwater 95301 (209) 357-6115	Kay Mc Atee Trans. Sup.  Randy Heberline Shop Foreman	(209) 358-0044
Delhi School District 9716 Hinton Ave Delhi 95315 (209) 668-6130	Randy Ford Trans. Dir.	
Gustine Unified 286 5th St. Gustine 95322 (209) 854-3784	Sheryl Trans. Dir.  Trident Truck Lines Mechanic	(209) 854-2607
Hilmar Unified 7807 Lander Ave. Hilmar 95324 (209) 632-1520	Michelle Rocha Lead Driver  Nich Jones MOT	(209) 669-2900
Livingston Union School Dist. 922 "B" St. Livingston 95334 (209) 394-4435	Wayne Koehn Trans. Dir.  David Meneses Mechanic	(209) 394-4435
Los Banos Unified 2659 E. Pacheco Blvd. Los Banos 93635 (209) 826-3195	Martin Ward Trans. Dir. Keith Iudice Mechanic	
Mc Swain School Dist. 926 N. Scott Rd. Merced 95340 (209) 723-3266	John Alferes Trans. Dir.  Brandon Blackwood Mechanic	(209) 358-2360
Merced City School Dist. 2105 Wardrow Merced 95348 (209) 385-6690	Cindy Mendencia Trans. Sup.	

Merced River  
2241 W. Turlock Rd.  
Snelling 95369  
(209) 722-4581

Denzel Mc Dowell  
Trans. Dir. (209) 358-4500

Merced Union High  
P. O. Box 2147  
Merced 95344  
(209) 385-6464

Joe Lial  
Trans. Dir. (209) 358-8957

Merced Transp. Co.  
300 Grogan Ave.  
Merced 95340

Joy Miller  
Trans. Dir. (209) 384-2575

Al Auer  
Mechanic

Snelling-Merced Falls Union  
P. O. Box 198  
Snelling 95369  
(209) 563-6414

Betty H. Woolstenhulme  
Supertintendent

Washington Elementary  
4402 W. Oakdale  
Winton 95388  
(209) 358-5186

L. Glen Fowler  
Supt./Principal (209) 722-4581

Denzel McDowell  
Trans. Dir. (209) 358-2488

Weaver Union Elem.  
3076 E. Childs Ave.  
Merced 95340  
(209) 723-2174

Bill Fisher  
Trans. Dir. (209) 723-4023

Grant Baker  
Mechanic (209) 382-0720

Winton Elementary  
7000 W. Almond Ave  
P. O. Box 8  
Winton 95388  
(209) 357-6175

Jessie  
Oper./Supv. (209) 357-6184

<b>MODOC COUNTY</b>	<b>CONTACT/TITLE</b>	<b>TELEPHONE NO.</b>
Big Valley School Dist P.O. Box 157 Bieber 96009 530-294-5266 (D.O.) 530-294-5491 (Garage)	Debbie Watters Supervisor	530-294-5892
	Kieth Peterson Mechanic	530-294-5881 (H)
Modoc Joint Unified 900 Main St. Alturas 96101 530-233-7201	Jim Lloyd Trans. Supv.	530-233-3960 (H)
	Mr. Harris	(530) 640-0443
Surprise Valley Jt. Unified Box 28-F Cedarville 96104 530-279-6146	Loren Vermillion Supervisor	530-279-6146 W 530-279-2525 H
Tulelake Basin Jt. Unified P. O. Box 547 Tulelake 96134 530-667-2250	Debra Tate Lead Driver	530-667-2250 W 530-667-2921 H
	Melvin Thompson Maintenance	530-667-4289 W

**MONO COUNTY**

**CONTACT/TITLE**

**TELEPHONE NO.**

Eastern Sierra Unified  
P. O. Box 575  
Bridgeport 93517  
(760) 932-7443

Robert Daniels

Mammoth Unified  
P. O. Box 1320  
Mammoth Lakes 93546  
(760) 935-4479

Judy King  
Supervisor

(619) 935-4497



<b>MONTEREY COUNTY</b>	<b>CONTACT/TITLE</b>	<b>TELEPHONE NO.</b>
Alisal School Dist. 1205 E. Market St. Salinas 93905 (831) 753-5700	Jerry Rank Lead Driver	(831) 753-5793
Carmel Unified School Dist. 4380 Carmel Valley Road P.O. Box 222700 Carmel 93923 (831) 624-6311	Mark Canepa Trans. Sup.  Ken Lutz Driver Instructor	
Gonzales Unified P. O. Drawer G Gonzales 93926 (831) 675-3663	Sal Santos Trans. Supv.	(831) 675-2679
Greenfield Union Dist. P. O. Box 97 Greenfield 93927 (831) 674-2444	David Bunch Trans. Lead  David Bunch Mechanic	(831) 674-2444
King City Joint Union 720 Broadway King City 93930 (831) 385-0606 ext. 6666	Kay King Dir. Of Trans.	(831) 385-0863
Monterey Peninsula Unified 540 Canyon Del Rey Monterey 93940 (831) 899-5133	Phil Martin Dir. Trans.  Jessica Costanza Dispatcher	
North Monterey County Unified 17590 Pesante Rd. Salinas 93907 (831) 663-3035	Lisa Gannon Dir./M.O.T.	(831)663-2881 (H)
Salinas City School Dist. 13A Villa Street Salinas 93901 (831) 753-5690	Rick Enriquey Trans. Supv.	

Soledad Unified School Dist.  
335 Market St.  
Soledad, CA 93960  
(831) 678-2180

Tony Villetas  
Dir. Oper.

Mary Hoagland  
Head Bus Driver/Trainer